

Did we mention our Volcano?



USGS

Skamania County is the southeastern gateway to **Mount St. Helens**.

This impressive mountain is almost entirely contained within the geographical boundaries of Skamania County.

To reach Mount St. Helens from the southeast, take a leisurely drive through the densely wooded mountains of the Gifford Pinchot National Forest and marvel at the old-growth trees.

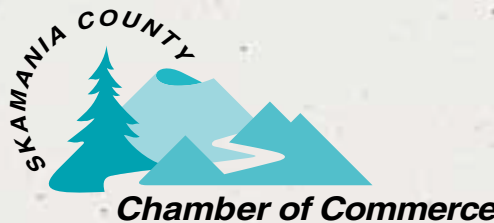
From Windy Ridge viewpoint, the spectacular view offers the opportunity to appreciate the new-growth trees and the emergence of a revitalized ecosystem following the massive eruption on May 18, 1980.



A beautiful 45 minute drive from Vancouver, WA and Portland, OR on State Hwy 14, or Interstate 84.

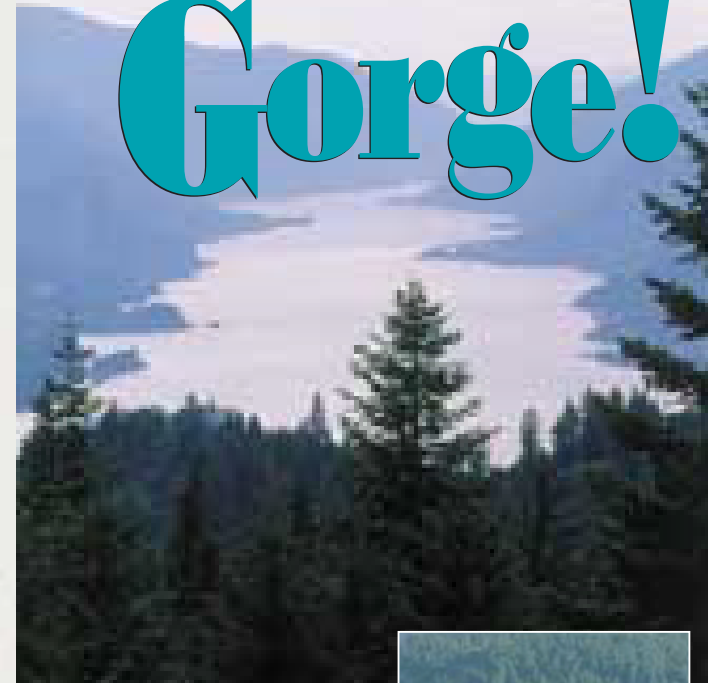
Lodging options include intimate hideaways, waterfront inns, historic hot springs, a premier destination resort and more!

For information and brochures on lodging, dining, calendar of events, scenic trails, waterfalls and guide services, contact the Skamania County Chamber of Commerce.



P.O. Box 1037 • Stevenson, WA 98648
Phone 509/427-8911 • Fax 509/427-5122
1-800-989-9178 • www.skamania.org
e-mail scoc@gorge.net

Experience the Columbia River Gorge!



Come see
**Skamania
County**



KEITH LIGGETT



SKAMANIA COUNTY PHOTO FILES

Something for everyone!

www.skamania.org • 1-800-989-9178



GIFFORD PINCHOT NATL. FOREST

Many stunning waterfalls and more await you...



ACKROYD PHOTOGRAPHY

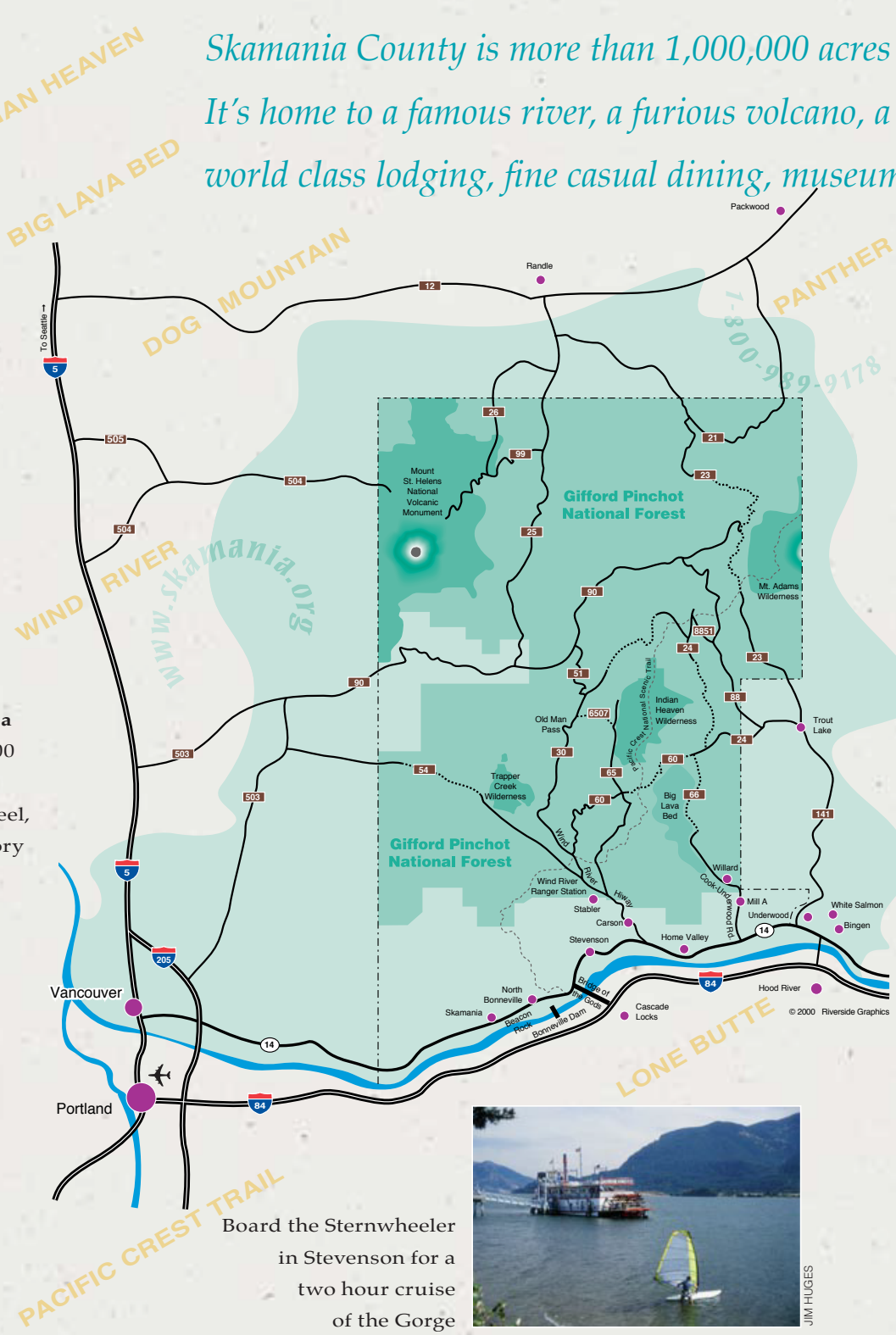
History comes alive in the **Columbia Gorge Interpretive Center**, an 11,000 square foot museum that features Native American artifacts, a fishwheel, and displays that illustrate the history of the Gorge from ancient times to the present.



USDA FOREST SERVICE

Beacon Rock; the 848' core of an extinct volcano, overlooks the magnificent Columbia River.

Skamania County is more than 1,000,000 acres of diverse, rugged country. It's home to a famous river, a furious volcano, a huge national forest and world class lodging, fine casual dining, museums and shopping. Enjoy!



GIFFORD PINCHOT NATL. FOREST

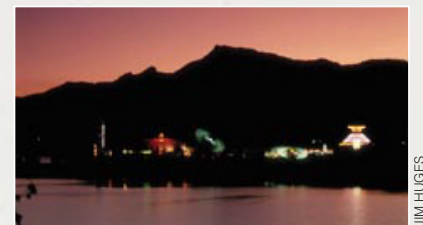
Skamania County and the Columbia River Gorge offer spectacular outdoor recreation. From easy to extreme, there is something for everyone!

Follow the footsteps of Lewis and Clark along Hwy 14.



JIM HUGES

Enjoy fantastic festivals...



JIM HUGES

... and family fun!



JIM HUGES

Board the Sternwheeler in Stevenson for a two hour cruise of the Gorge

INDIAN HEAVEN

BIG LAVA BED

DOG MOUNTAIN

PANTHER CREEK

APE CAVE

WIND RIVER

NATURAL BRIDGES

OLD MAN PASS

LONE BUTTE

PACIFIC CREST TRAIL

ICE CAVE